



The Distance – Gabrielle Jones

*In a short amount of time Gabrielle was able to encourage my 'instinct', and advance my knowledge of how a landscape should/could be. She opened my eyes to techniques and ideas I hadn't contemplated, allowing me to refine and advance my style with extremely pleasing results.*

Will, Mosman

*Gabrielle is able to clearly understand the preferences and strengths of every pupil. She is therefore able to help them maximise their potential through individual attention within her friendly and supportive group classes. She gives both practical instruction in colour appreciation, composition, etc... and thoughtful ideas to stimulate creativity. She also provides honest and constructive feedback to her pupils. Above all, Gabrielle exhibits a passion and enthusiasm for her subject that is transmitted to everybody around her.*

Susan, Avalon

## Your Tutor

Gabrielle Jones is an experienced and in-demand painting and drawing instructor. Since graduating from the National Art School with Distinction, Gabrielle has been appointed Artist in Residence at Arthur Boyd's "Bundanon" in 2005, in Le Meridien Hotel, Tahiti and Temanuatu Hotel, Bora Bora in 2007 and with the Fundacion Valparaiso in Almeria, Spain in 2011. She has been twice selected as a finalist in the prestigious Mosman Art Prize, and as a finalist in the \$25,000 Fleurieu, the \$20,000 Paddington, the \$18,000 Portia Geach, the \$10,000 Norville Art Prize, the \$10,000 Cowra Art Prize, the \$10,000 Duke Gold Coast Art Prize, the \$15,000 Muswellbrook Art Prize and the inaugural \$20,000 Art on the Rocks and \$8000 St George Art Prizes. She was selected three times to exhibit at the New England Regional Gallery's Packsaddle Selling exhibition, in "An Intimate Look" at Bundanon Gallery and "Spectrum" at NSW Parliament House, and has won, been runner-up or highly commended in numerous prizes. She has held seven solo shows at some of the top galleries in Sydney, Melbourne and Perth, had her first solo show in a public gallery at the Goulburn Regional Gallery in November 2010. Her work is in the Bundanon Trust, Westfield Sydney, Sydney Children's Hospital and Fundacion Valparaiso (Spain) Collections and private collections in Australia, New Zealand, London, New York and The Netherlands.

**GIFT CERTIFICATES AVAILABLE**

**For further information and bookings contact:**

**Gabrielle Jones**

**ART WORKSHOPS**

**St John's Church Hall**

**Spring Street, Birchgrove**

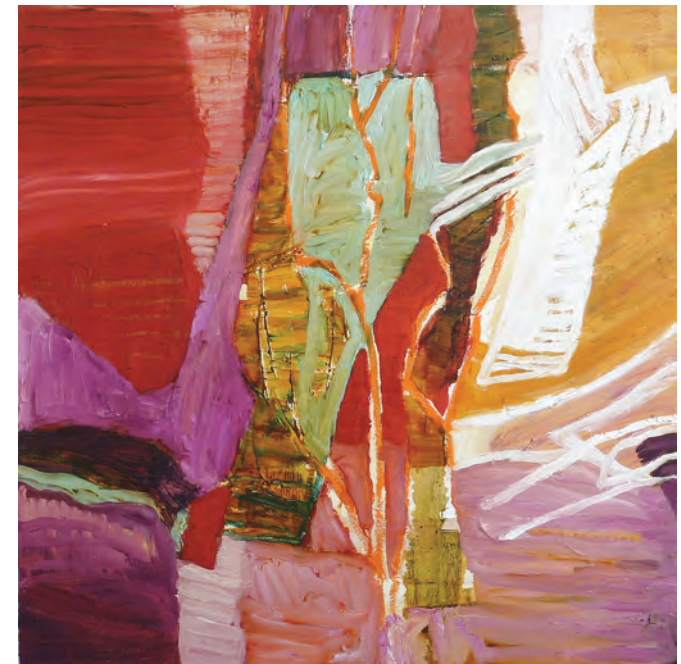
Cnr Thomas St, easy (FREE) street parking  
(Bus and ferry nearby)

email: [art@gabriellejones.com.au](mailto:art@gabriellejones.com.au)

[www.gabriellejones.com.au](http://www.gabriellejones.com.au)

**ENQUIRE NOW**

**phone Gabrielle on 0410 622 264**



White Gums – Hillside Gabrielle Jones

# Gabrielle Jones Art Workshops Balmain

Practising, Exhibiting Artist,  
National Art School trained BFA (NAS),  
Experienced teacher BA (Syd) – Education, Psychology

**Why not invest in yourself, have fun, learn something new and even find your creative side? Absolute beginners welcome!**

**St John's Church Hall  
Spring Street, Birchgrove**

Cnr Thomas Street, easy (FREE) street parking  
Bus and ferry nearby

**ENQUIRE NOW**

**Gabrielle Jones 0410 622 264  
[www.gabriellejones.com.au](http://www.gabriellejones.com.au)**

**NOW AVAILABLE:  
7 day Painting Retreats in Bali:**

[www.baliartretreats.com](http://www.baliartretreats.com)

Next Retreat: 14-21 April 2012

## Balmain Painting Classes

**Fun and challenging painting classes designed to ignite your passion for painting or to take you to the next level in your art!**

- > Individual tuition – Classes limited to 10 students
- > Variety of exercises ensure fast learning and early success
- > Painting fundamentals – tone, colour, composition, perspective, abstraction, painting techniques and expressive brushwork
- > Subjects include Portraits, Still life, Landscape and Abstraction
- > Intermediate and Advanced students a speciality
- > Self generated subjects welcome
- > Build confidence, strengthen weaknesses in art making
- > Develop observational and critical techniques
- > Stimulate creativity and ideas
- > Find your own style and expressive voice
- > Discover a range of historical and contemporary artists, and explore materials
- > HSC & Portfolio presentations
- > Spacious airy classroom with modern facilities and kitchen
- > Morning and afternoon tea provided

### Term: 8 weeks along school term dates

(Join anytime)

**Term 1: 2nd February – 31st March 2012**

**Term 2: 3rd May – 23rd June**

**Term 3: 27 July – 15th September**

**Term 4: 18th October – 8th December**

### Session Times and Full Term Rates:

(add \$10 casual rate, minimum 4 sessions)

Thursday and Friday 10:00am – 2:30pm \$75/class

Thursday evening 6:30pm – 9:00pm \$55/class

Saturdays 9:30am – 12:30pm \$65/class

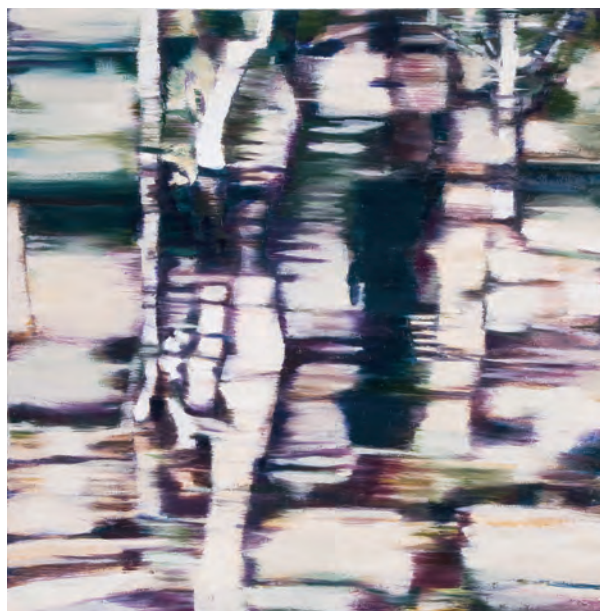
Rainchecks available within term dates, subject to class size restrictions

### Occasional Workshops (10.00am-4.00pm)

One day \$125 Two days \$220

### Portable Workshops (10.00am-3.00pm)

One day \$450 + \$40 per hour travel + expenses



Uncertain Truth – Gabrielle Jones

*I attended two landscape workshops held by Gabrielle Jones... from sketching in the park through to the execution of the painting [the workshop] was fun and informative with lots of guidance along the way and I felt I learned so much in a very relaxed atmosphere. I found it a very useful approach especially as I wished to paint in a more abstract style if possible. I would certainly like to do another workshop with Gabrielle.*

Jan, Birchgrove

*I have been to a number of Gabrielle's private art classes and I hope to go to many more. I originally came to learn about painting with acrylics but I have learnt so much more. Gabrielle has an immense amount of knowledge about art in her head and can hardly wait to impart as much of it as possible to you (in a good way!). I have just learnt so much, ranging from landscape to abstract to still life and everything in between. I have also learnt about the importance of tone, mixing from a limited palette, warm and cool colours and how they can change depending on their relationship to each other and that's just for starters! Gabrielle is also very generous with her knowledge and always encouraging which is so important to any artist.*

Carolyn, Annandale

## Occasional 1 or 2 day Workshops

From time to time we offer a fun, informative and rewarding exploration into particular areas of interest, such as: Landscape Painting; Creativity and Abstraction; Painting Fundamentals; and Colour.

Let us know your area of interest and need and we'll design a workshop for you.

Ask about currently scheduled workshops.

## Portable Workshops

### Weekend workshops at your location

**Are you in charge of a resort and want to attract your guests with cultural interests?**

**Do you have a wonderful home, holiday house or favourite retreat in a special location?**

**Want to develop your painting or gain guidance or mentoring for a creative group of friends?**

**Or do you just want to indulge your creative juices and see your environment in a new light?**

Perfect for connecting into the art scene, hosting a weekend with a difference for friends or family, immersing yourself in landscape "Plein air" painting, or for group weekends away.

**Gabrielle will design a workshop format especially for your needs.**

You could see and experience your favourite place in a new and different way, leave your everyday life behind and deeply relax by accessing the Right Side of the Brain and learning to play again. Or you could discover a creative bone you may have thought dormant, dead or gone!

### Student exhibition:

Opening Night: Thursday 29th March, 6-9pm

Continues 10am-4pm till Sunday 1st April

Balmain Watch House, 179 Darling St, Balmain

*Thank you Gabrielle for all your fabulous workshops, I look forward to learning more under your generous guidance. Gabrielle's workshops are always full of both inspiration and knowledge as well as constructive critique and direction for your own work.*

Galia, Ryde